



Mats

Atrium PlusTM Rolls

Superior Performance
for High Traffic Areas

MillikenTM

Atrium Plus™

Rolls of High Performance Textile Matting

Atrium Plus™ combines Milliken Mats patented high performance Atrium textile and our high quality Everwear™ vinyl backing to provide superior performance and ultimate installation flexibility. Atrium Plus can be cut to custom sizes to produce the highest quality runners in the market today, it can be fitted and seamed for wall-to-wall installations, or it can be converted into standard sized loose laid mats.

No matter the need, you get our high performance Atrium textile that provides superior dirt and moisture absorption. The ideal product for high traffic areas with scraping-action mono-filament fibers and dust and moisture-collecting fine-filament fibers.



Color Range

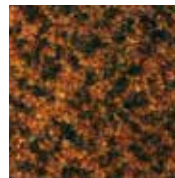
Atrium Plus™ comes in a range of functional and contemporary colors and is totally color coordinated with Obex Forma™, Milliken Mat's Modular Installed Entryway System.



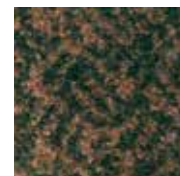
Ash
7010



Lagoon
7020



Sand
7012



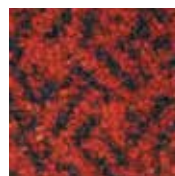
Bark
7016



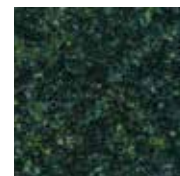
Ammonite
7011



Twilight
7021



Volcano
7014



Fern
7018

Construction

The unsurpassed functionality of Atrium Plus™ results from the combination of two types of polyamide 6.6 high quality fibers – twisted together and heat set before tufting:

- The multi filaments that capture moisture instantly when people walk on the textile
- The mono filaments working as tough scrapers against dirt particles brought by shoes
- Then the purposely open tufting construction that provides room for dirt storage whilst allowing easy dirt release for maintenance

When bonding Atrium Plus™ rolls to the sub floor, it is recommended to use the appropriate adhesive compatible with Everwear™ vinyl backing – we recommend F. Ball F74 or F81 or a similar product– depending on site conditions. Please refer to installation guidelines.

Maintenance

Daily vacuum cleaning is recommended to maintain full textile performance.

Periodic cleaning by injection/extraction method is necessary to ensure durable efficiency (water temperature should not exceed 50°C - 122°F). Dry cleaning method with chemical powder such as Millicare® is also adapted. Maintenance frequency must be adapted to traffic and soiling conditions.

Suitable for intense traffic up to 5,000 people per day.



Cut to custom sized loose laid mats

Atrium Plus can be cut to any desired size to create individual entry way mats. You have the option to leave the mat borderless or re-edge using any after market standard vinyl edging system.

Cut to custom sized runners

For larger mat installations, our 2m wide rolls can be custom cut to fit any space. Installers can use different colors of Atrium to create graphic inlay messages and logos in custom sizes. Re-edge the runners using any standard flexible vinyl edging system and you can roll the mat and store for convenience.

Fitted Installations

When you need the dirt and moisture collection of matting products, but need a permanent installation, look to Atrium Plus rolls for ease of installation and seamability. Atrium Plus can be bonded to the subfloor using any adhesive compatible with Everwear vinyl backing – we recommend F. Ball F74 or F81 or a similar product, depending on site conditions.

Technical Specifications

| Product Information | Atrium Plus™ Rolls |
|--------------------------------|---|
| Yarn type | 100% Polyamide 6.6 – mono & multi filaments |
| Yarn construction | High Twist and Heat Set combination of mono & multi filaments |
| Textile weight | Approx. 1075 gms/m ² |
| Backing type | Everwear™ vinyl backing (2 mm thickness) |
| Total thickness | 18/64" |
| Total weight (+/- 5%) | 90 oz/yd ² |
| Textile Dyeing Technology | Millitron® |
| Textile light fastness | Xenotest ISO 105-B01: >6 on blue scale |
| Wear resistance | Vetterman drum test 66,000 cycles |
| Fire resistance classification | DOC FF1-70/DOC FF2-70 |
| Roll size in cm | 200x2500 (no roll less than 1500 cm) |
| Guarantee | 1 year guarantee against manufacturing defects. |

All specifications are according to ISO 9001 Quality certification and ISO 14001 Environmental certification, and are subject to change to meet the ongoing improvements and innovation of our products.

Please Note: As each customer's use of our product may be different, information we provide, including without limitation, recommendations, test results, samples, care/labeling/processing instructions or marketing advice, is provided in good faith but without warranty and without accepting any responsibility/liability. Each customer must test and be responsible for its own specific use, further processing, labeling, marketing, ect. All sales are exclusively subject to our standard terms of sales posted at www.milliken.com/terms (all additional/different terms are rejected) unless explicitly agreed otherwise in a signed writing.

Milliken - Americas

920 Milliken Road Spartanburg
South Carolina 29303

T: 1.800.342.5539

F: 706.880.5358

Information: matsinfoamericas@milliken.com

Orders: matsordersamericas@milliken.com

Milliken - Europe, Africa, Middle East

Hilton Fold Lane

Middleton

M24 2HZ Manchester

United Kingdom

T: +44 1942 612999

F: +44 1942 612499

Information: matsinfoeurope@milliken.com

Orders: matsorderseurope@milliken.com

Milliken - Asia, India, Australia, New Zealand

15th floor, Building 2, 1535 Hong Mei Road
Xuhui District, Shanghai,
China 200030

T: +86 21 61455555

F: +86 21 61 455558

Information: matsinfoasiapacific@milliken.com

Orders: matsordersasiapacific@milliken.com

walkoffmats.com | design website: positive-impressions.com