

An aerial photograph of a highway interchange. A blue truck is captured in motion, blurred as it travels across the road. The road surface is marked with lane lines and has several circular manholes. In the background, there are utility poles, a fire hydrant, and a red fire truck. The overall scene is a busy urban or suburban highway intersection.

THE OMNI[®]
PORTFOLIO

ACCESS ALL AREAS
STAGE DOOR
ADMIT ONE
MYRIAD
INTEGRATE
SYNDICATE
COMFORTABLE CONCRETE
CONCOURSE
FORMWORK

Milliken[™]

INSPIRED. INSPIRING.

We love to inspire and we love to be inspired. Every day we seek new places of inspiration and challenge ourselves to bring you floor coverings that make you look at carpet in a new and refreshing light. Our inspiration has no constraints and finds influence in thoughts, everyday objects, narratives and ideas that give our products a unique perspective to challenge your perceptions of carpet.

Es macht uns Freude Inspiration zu sein wie auch inspiriert zu werden. Tagtäglich lassen wir uns von neuen Quellen anregen, weil für es uns eine Herausforderung ist, Ihnen Produkte zu bieten die Sie Teppichböden in einem neuen und frischen Licht sehen lassen. Unsere Inspirationen sind vielfältig und werden gespeist von überraschenden Gedanken, alltäglichen Dingen, Geschichten und Ideen die unseren Produkten eine neue Perspektive geben und fordern Sie heraus Ihre Einstellung zu Teppichböden zu überdenken.

Nous aimons inspirer et être inspiré. Nous sommes toujours en quête de nouveaux endroits pour chercher l'inspiration et notre défi est de vous présenter des revêtements de sol qui font voir la moquette d'un œil neuf et différent. Notre inspiration ne connaît aucune limite, nous la puisons dans toutes les sources: pensées, objets de tous les jours, textes, idées... Tout est bon pour apporter à nos produits une perspective unique, capable de changer la perception que vous pouvez avoir de la moquette.

Nos encanta inspirar y nos encanta recibir inspiración. Cada día buscamos nuevas fuentes de inspiración y tratamos de superarnos a nosotros mismos para ofrecer revestimientos de suelo que le permitan contemplar la moqueta desde un punto de vista nuevo y refrescante. Nuestra inspiración no conoce límites y procede de pensamientos, objetos de la vida cotidiana, relatos e ideas que proporcionan a nuestros productos una perspectiva única para poder desafiar su percepción de la moqueta.

THE OMNI[®] PORTFOLIO



OMNI
Access All Areas

6-7



OMNI
Stage Door

8-9



OMNI
Admit One

10-11



OMNI
Myriad

12-15



OMNI
Integrate

16-17



OMNI
Syndicate

18-19



OMNI
Comfortable Concrete

20-23



OMNI
Concourse

24-25



FORMWORK

26-27 Neutrals
28-29 Brights

OMNI is a patented design concept that allows modular carpet patterns to be totally non directional and therefore installed completely randomly on the floor.



Every OMNI floor is unique...



because OMNI carpet is supplied randomly and installed randomly, no two OMNI installations will ever look the same

OMNI offers a sustainable solution...



reduced wastage means reduced materials and therefore a reduced environmental footprint

OMNI allows easy under floor access...



with no need to follow arrow direction, individual tiles can be swiftly and easily replaced, without the risk of shading issues, when under floor access is required or if damage or soiling occurs

OMNI installation saves time...



again, because there is no need to follow directional arrows, OMNI carpet is easier and quicker to install

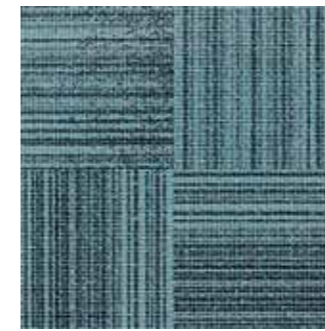
OMNI saves installation cost...



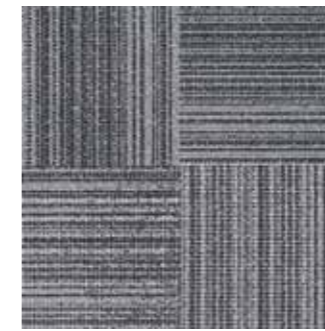
with no requirement for pattern matching, wastage during installation is significantly reduced and you can even use off-cuts in perimeter areas. A typical modular carpet installation runs at around 4% wastage and a typical broadloom installation runs at around 10% wastage. With OMNI, wastage is estimated at less than 1%



Colour shown 5418 Footlight



7001-5431 Opening Night



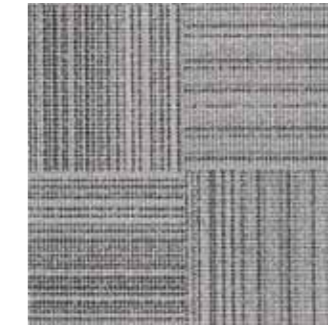
7001-5423 Equity



7001-5426 Prop



7001-5427 Rig



7001-5418 Footlight



7001-5429 Supporting Role



7001-5420 Aside



7001-5424 Box Office



7001-5437 Front Of House



7001-5419 In The Wings



7001-5436 Lyric



7001-5422 Backstage Pass



7001-5425 Finale



7001-5551 Green Room



7001-5435 Permit

Full tiles shown
For full technical specification
see page 30

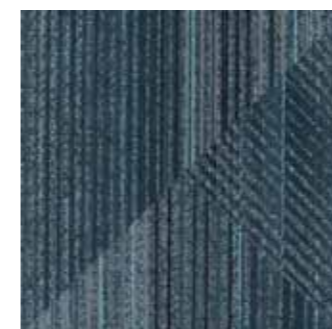
Illustration de dalles entieres
Pour les specifications
techniques completes voyez
page 30

Volle Fliesen abgebildet
Für weitere technische
Informationen siehe Seite 30

Muestras de loseta entera
Para especificaciones tecnicas
completas vea pagina 30



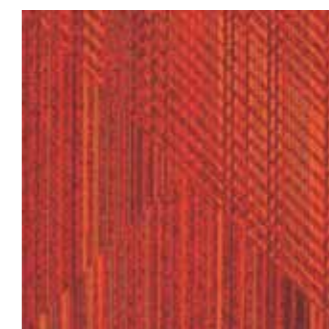
Colour shown **SDR15 Sellout**



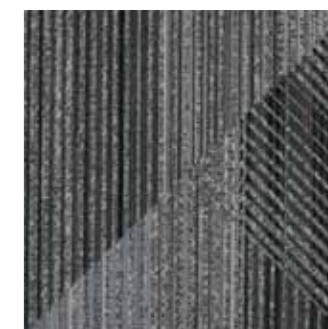
SDR1 Set List



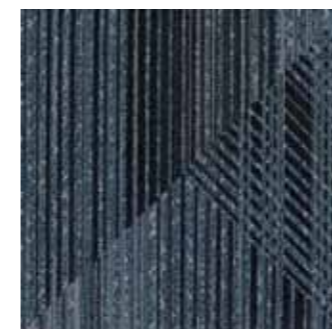
SDR2 Critic



SDR5 Guest Appearance



SDR6 Arena



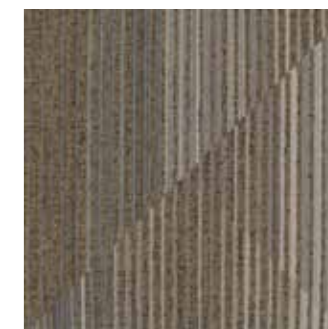
SDR3 Stadium



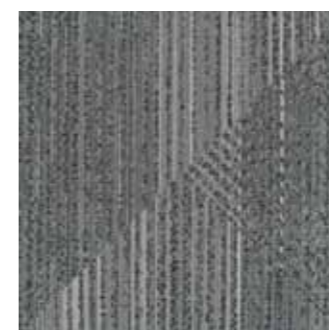
SDR4 Sound Check



SDR7 Prompt



SDR14 Green Room



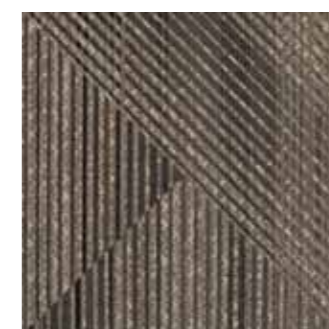
SDR15 Sellout



SDR11 Prom



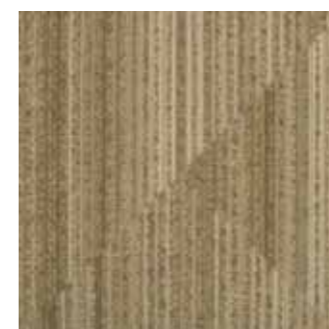
SDR8 Main Stage



SDR9 Upstage



SDR12 Matinée



SDR13 Script



SDR10 Lyric

Full tiles shown
For full technical specification
see page 30

Illustration de dalles entières
Pour les spécifications
techniques complètes voyez
page 30

Volle Fliesen abgebildet
Für weitere technische
Informationen siehe Seite 30

Muestras de loseta entera
Para especificaciones técnicas
completas vea página 30



Colour shown ADM15 Smash Hit



ADM1 Set List



ADM2 Equity



ADM5 Centre Stage



ADM6 Gig



ADM3 Audition



ADM4 Sound Check



ADM7 Prompt



ADM14 Green Room



ADM15 Smash Hit



ADM11 Spectator



ADM8 Permit



ADM9 On Tour



ADM12 Act One



ADM13 Front Of House



ADM10 Lyric

Full tiles shown
For full technical specification
see page 30

Illustration de dalles entieres
Pour les specifications
techniques completes voyez
page 30

Volle Fliesen abgebildet
Für weitere technische
Informationen siehe Seite 30

Muestras de loseta entera
Para especificaciones tecnicas
completas vea pagina 30



Colour shown 13 Tin



1001-26 Amalgam



1001-13 Tin



1001-22 Fret



1001-35 Gauze



1001-32 Amulet



1001-29 Copperplate



1001-6 Fusion



1001-4 Ingot



1001-5 Splice



1001-19 Assay



1001-11 Tungsten



1001-20 Web

Full tiles shown
For full technical specification
see page 31

Illustration de dalles entieres
Pour les specifications
techniques completes voyez
page 31

Volle Fliesen abgebildet
Für weitere technische
Informationen siehe Seite 31

Muestras de loseta entera
Para especificaciones tecnicas
completas vea pagina 31



Colour shown **1 Forge**



1001-1 Forge



1001-33 Wired



1001-14 Solder



1001-23 Flux



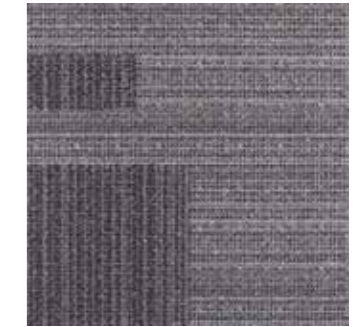
1001-36 Shimmer



1001-2 Chainmail



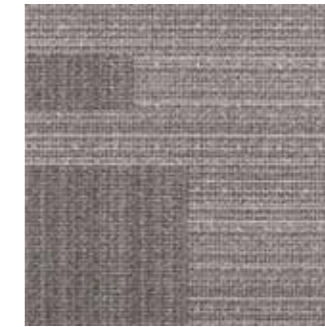
1001-38 Steel



1001-16 Weld



1001-27 Nickel



1001-17 Cable



1001-18 Carbon



1001-28 Filigree



1001-3 Alloy

Full tiles shown
For full technical specification
see page 31

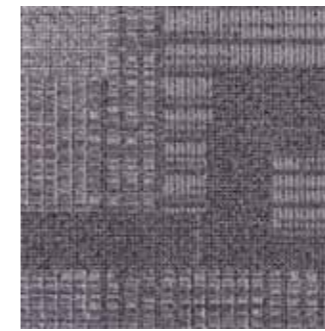
Illustration de dalles entieres
Pour les specifications
techniques completes voyez
page 31

Volle Fliesen abgebildet
Für weitere technische
Informationen siehe Seite 31

Muestras de loseta entera
Para especificaciones tecnicas
completas vea pagina 31



Colour shown 104 Scaffold



1001-118 Labyrinth



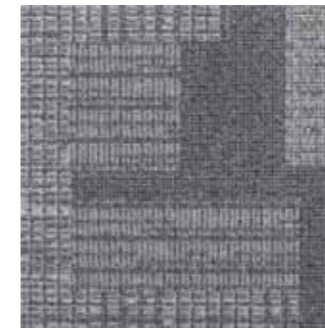
1001-104 Scaffold



1001-102 Lattice



1001-101 Span



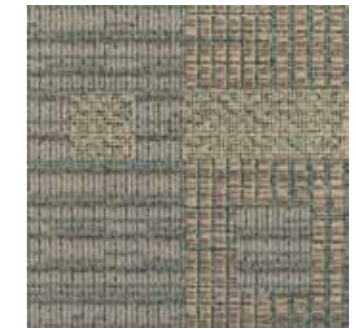
1001-105 Grid



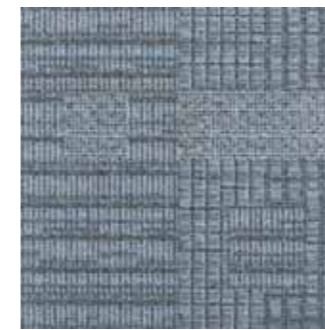
1001-108 Screen



1001-113 Traverse



1001-114 Panel



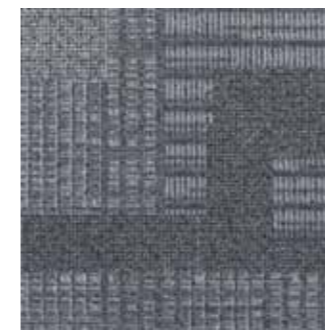
1001-111 Junction



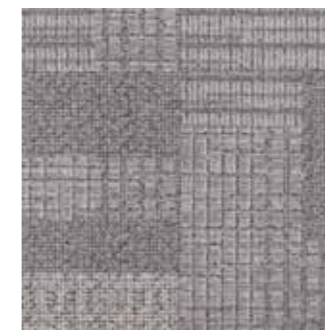
1001-115 Annex



1001-106 Mantle



1001-112 Rivet



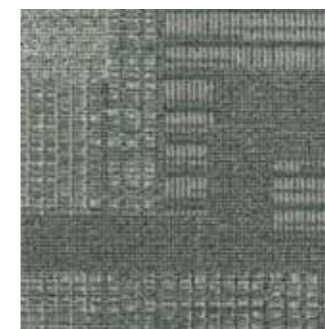
1001-103 Construct



1001-107 Plexus



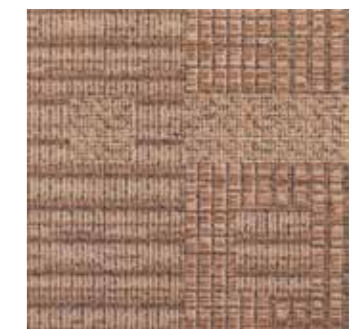
1001-109 Raft



1001-110 Connect



1001-117 Mishmesh



1001-116 Fender

Full tiles shown
For full technical specification
see page 31

Illustration de dalles entieres
Pour les specifications
techniques completes voyez
page 31

Volle Fliesen abgebildet
Für weitere technische
Informationen siehe Seite 31

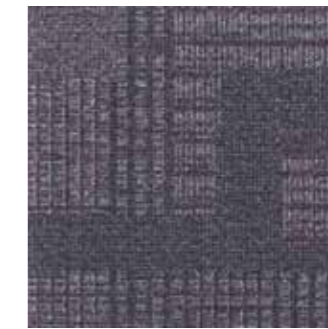
Muestras de loseta entera
Para especificaciones tecnicas
completas vea pagina 31



1004-5498 Raleigh



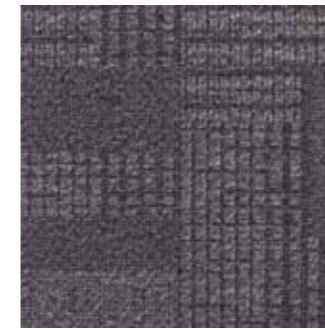
1004-202 Congress



1004-205 Alchemy



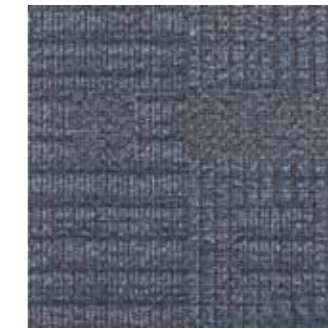
1004-209 Assembly



1004-203 Kindred Spirit



1004-219 Jet Set



1004-216 Union



1004-210 League



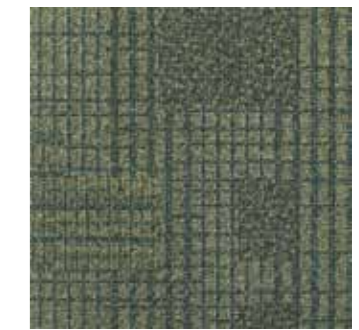
1004-218 Synthesis



1004-213 Accord



1004-207 Convoy



1004-208 Medley



1004-215 Muster



1004-214 Mix



1004-201 Alliance



1004-211 Combo



1004-220 Mingle



1004-204 Usher



1004-212 Composite



1004-221 Merge

Full tiles shown
For full technical specification
see page 32

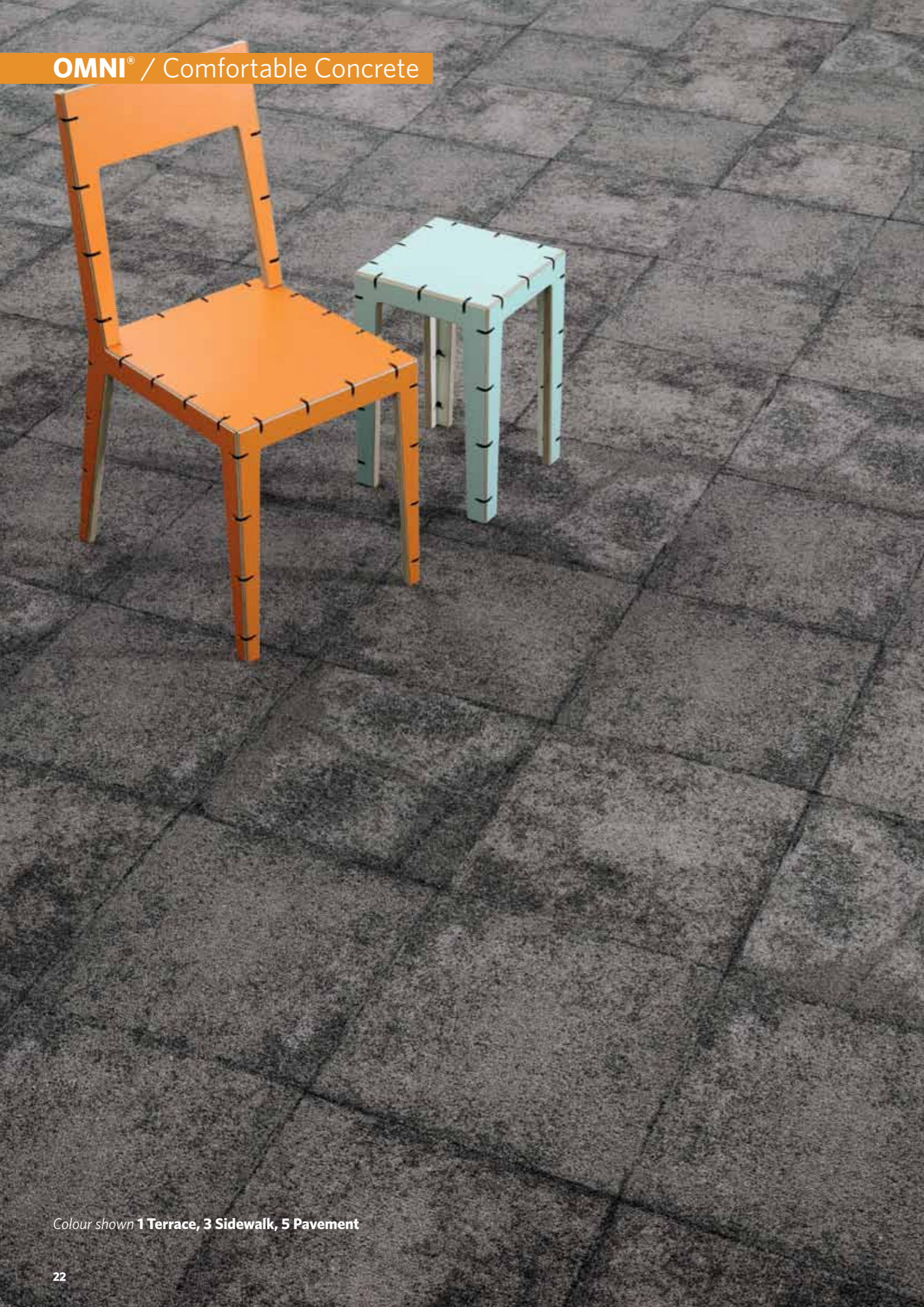
Illustration de dalles entieres
Pour les specifications
techniques completes voyez
page 32

Volle Fliesen abgebildet
Für weitere technische
Informationen siehe Seite 32

Muestras de loseta entera
Para especificaciones tecnicas
completas vea pagina 32



Colour shown A combination of all the designs shown on next page



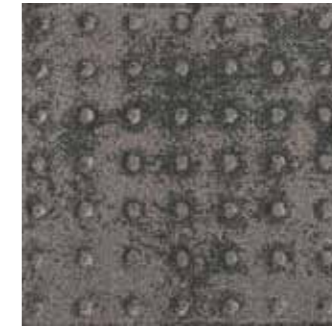
1332-1 Terrace



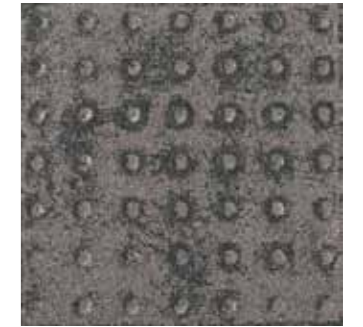
1332-3 Sidewalk



1332-5 Pavement



1332-4 Junction



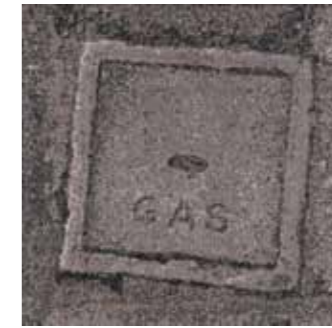
1332-2 Zone



1332-6 This Way



1332-7 Straight On



1332-8 Gas

Colour shown 1 Terrace, 3 Sidewalk, 5 Pavement

Full tiles shown
For full technical specification
see page 31

Illustration de dalles entieres
Pour les specifications
techniques completes voyez
page 31

Volle Fliesen abgebildet
Für weitere technische
Informationen siehe Seite 31

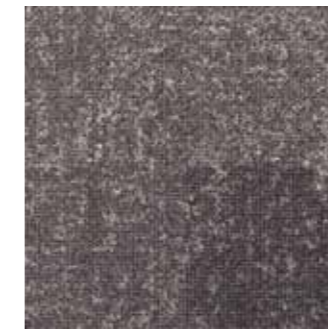
Muestras de loseta entera
Para especificaciones tecnicas
completas vea pagina 31



Colour shown 1004-249



1004-243



1004-242



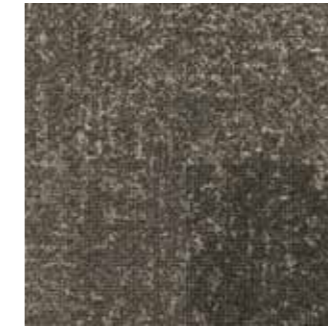
1004-249



1004-246



1004-5521



1004-247



1004-241



1004-5214



1004-244



1004-245

Full tiles shown
For full technical specification
see page 32

Illustration de dalles entieres
Pour les specifications
techniques completes voyez
page 32

Volle Fliesen abgebildet
Für weitere technische
Informationen siehe Seite 32

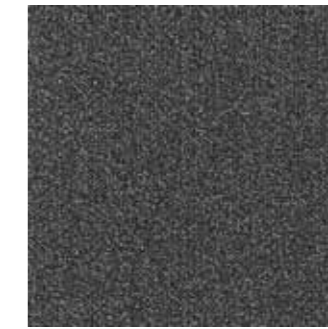
Muestras de loseta entera
Para especificaciones tecnicas
completas vea pagina 32



FW04 Cement



FW01 Pier



FW02 Foundation



FW12 Render



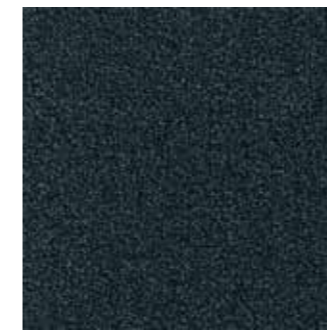
FW06 Gable



FW10 Wainscot



FW13 Architrave



FW08 Pitch



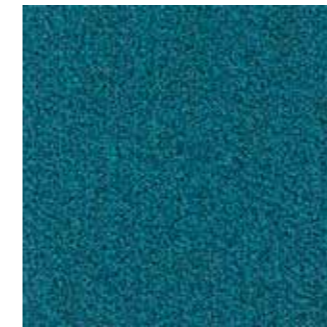
FW03 Rafter



FW23 Mullion



FW05 Blueprint



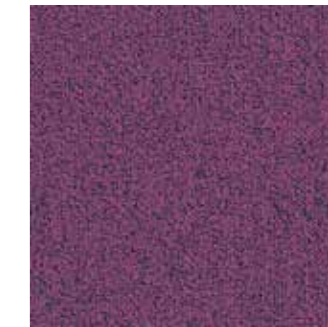
FW07 Hip



FW20 Cove



FW22 Bolster



FW21 Dado



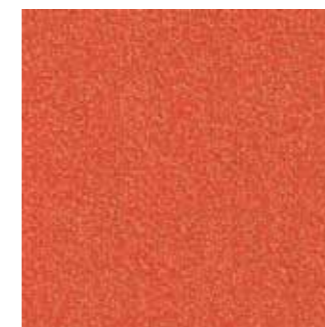
FW17 Scaffold



FW18 Lintel



FW09 Frieze



FW16 Mezzanine



FW19 Keeper



FW11 Sash

Quarter tile shown
For full technical specification
see page 33

Illustration de quarts de dalles
Pour les spécifications
techniques complètes voyez
page 33

Viertelfliesen abgebildet
Für weitere technische
Informationen siehe Seite 33

Muestras de cuartos de loseta
Para especificaciones técnicas
completas vea página 33

Design	Colour	Colour Name	L Value	Y Value
Access All Areas Page 6-7	5418	Footlight	43.8	13.7
	5419	In The Wings	38.9	10.6
	5420	Aside	40.0	11.3
	5422	Backstage Pass	26.0	4.7
	5423	Equity	38.0	10.1
	5424	Box Office	39.2	10.8
	5425	Finale	30.8	6.6
	5426	Prop	25.4	4.5
	5427	Rig	29.4	6.0
	5429	Supporting Role	30.5	6.4
	5431	Opening Night	38.1	10.1
	5435	Permit	44.8	14.4
	5436	Lyric	47.6	16.5
	5437	Front Of House	45.2	14.7
	5551	Green Room	41.0	11.9

Design	Colour	Colour Name	L Value	Y Value
Admit One Page 10-11	ADM1	Set List	37.0	9.6
	ADM2	Equity	42.1	12.6
	ADM3	Audition	25.0	4.4
	ADM4	Sound Check	33.4	7.7
	ADM5	Centre Stage	49.4	18.0
	ADM6	Gig	45.6	15.0
	ADM7	Prompt	41.7	12.3
	ADM8	Permit	44.8	14.4
	ADM9	On Tour	40.6	11.6
	ADM10	Lyric	47.4	16.3
	ADM11	Spectator	29.9	6.2
	ADM12	Act One	42.7	12.9
	ADM13	Front Of House	45.2	14.7
	ADM14	Green Room	41.4	12.1
	ADM15	Smash Hit	35.3	8.6

Design	Colour	Colour Name	L Value	Y Value
Comfortable Concrete Page 20-23	1	Terrace	38.6	10.4
	2	Zone	31.3	6.8
	3	Sidewalk	34.1	8.1
	4	Junction	33.4	7.7
	5	Pavement	38.4	10.3
	6	This Way	35.2	8.6
	7	Straight On	31.2	6.7
	8	Gas	37.2	9.6

Design	Colour	Colour Name	L Value	Y Value
Concourse Page 24-25	241		31.9	7.0
	242		33.9	8.0
	243		33.7	7.9
	244		29.0	5.8
	245		29.2	5.9
	246		28.1	5.5
	247		32.5	7.3
	249		33.2	7.6
	5214		24.4	4.2
	5521		31.4	6.8

Design	Colour	Colour Name	L Value	Y Value
Formwork Page 26-29	FW01	Pier	44.1	13.9
	FW02	Foundation	30.9	6.6
	FW03	Rafter	23.1	3.8
	FW04	Cement	44.9	14.5
	FW05	Blueprint	25.3	4.5
	FW06	Gable	22.8	3.8
	FW07	Hip	30.4	6.4
	FW08	Pitch	17.5	2.4
	FW09	Frieze	52.6	20.7
	FW10	Wainscot	31.4	6.8
	FW11	Sash	28.3	5.6
	FW12	Render	26.3	4.8
	FW13	Architrave	43.4	13.4
	FW15	Mortise	34.7	8.4
	FW16	Mezzanine	37.0	9.6
	FW17	Scaffold	30.9	6.6
	FW18	Lintel	27.4	5.3
	FW19	Keeper	21.7	3.4
	FW20	Cove	34.6	8.3
	FW21	Dado	25.8	4.7
	FW22	Bolster	31.9	7.0
	FW24	Keystone	36.4	9.2

Design	Colour	Colour Name	L Value	Y Value
Integrate Page 16-17	101	Span	43.6	13.6
	102	Lattice	47.8	16.6
	103	Construct	44.4	14.1
	104	Scaffold	41.6	12.2
	105	Grid	44.5	14.2
	106	Mantle	46.0	15.3
	107	Plexus	45.3	14.8
	108	Screen	43.5	13.5
	109	Raft	45.0	14.5
	110	Connect	40.7	11.7
	111	Junction	40.1	11.3
	112	Rivet	38.5	10.4
	113	Traverse	42.3	12.7
	114	Panel	45.3	14.8
	115	Annex	36.9	9.5
	116	Fender	47.1	16.1
	117	Mishmesh	46.0	15.3
	118	Labyrinth	40.8	11.7

Design	Colour	Colour Name	L Value	Y Value
Myriad Page 12-15	1	Forge	41.8	12.4
	2	Chainmail	41.9	12.4
	3	Alloy	37.0	9.5
	4	Ingot	45.5	14.9
	5	Splice	44.6	14.3
	6	Fusion	36.0	9.0
	11	Tungsten	46.7	15.8
	13	Tin	48.3	17.0
	14	Solder	36.2	9.1
	16	Weld	33.8	7.9
	17	Cable	45.6	15.0
	18	Carbon	40.1	11.3
	19	Assay	43.8	13.7
	20	Web	50.5	18.8
	22	Fret	44.7	14.3
	23	Flux	41.8	12.4
	26	Amalgam	44.2	14.0
	27	Nickel	45.9	15.2
	28	Filigree	41.9	12.4
	29	Copperplate	40.9	11.8
	32	Amulet	40.4	11.5
	33	Wired	35.4	8.7
	35	Gauze	47.7	16.6
	36	Shimmer	37.6	9.9
	38	Steel	40.4	11.5

Design	Colour	Colour Name	L Value	Y Value
Stage Door Page 8-9	SDR1	Set List	36.2	9.1
	SDR2	Critic	44.2	13.9
	SDR3	Stadium	31.6	6.9
	SDR4	Sound Check	29.6	6.1
	SDR5	Guest Appearance	32.0	7.1
	SDR6	Arena	36.5	9.3
	SDR7	Prompt	47.3	16.3
	SDR8	Main Stage	42.0	12.5
	SDR9	Upstage	40.6	11.6
	SDR10	Lyric	47.9	16.7
	SDR11	Prom	31.8	7.0
	SDR12	Matinée	42.7	13.0
	SDR13	Script	50.3	18.7
	SDR14	Green Room	40.4	11.5
	SDR15	Sellout	39.9	11.2

Design	Colour	Colour Name	L Value	Y Value
Syndicate Page 18-19	201	Alliance	36.4	9.2
	202	Congress	28.2	5.5
	203	Kindred Spirit	35.4	8.7
	204	Usher	30.7	6.5
	205	Alchemy	27.7	5.3
	207	Convoy	35.6	8.8
	208	Medley	34.9	8.4
	209	Assembly	28.4	5.6
	210	League	20.9	3.2
	211	Combo	35.1	8.5
	212	Composite	32.8	7.4
	213	Accord	35.8	8.9
	214	Mix	32.1	7.1
	215	Muster	29.0	5.8
	216	Union	32.1	7.1
	218	Synthesis	32.2	7.2
	219	Jet Set	23.1	3.8
	220	Mingle	38.3	10.3
	221	Merge	36.6	9.3
	5498	Raleigh	25.0	4.4

Photography - Lux Photodigital (www.luxphotodigital.co.uk) **Prop Sourcing** - Louisa Grey (www.louisagrey.com)

Brochure Design - Designcorp (www.designcorp.co.uk)

Furniture:

Access All Areas - George Lounge Chair, & Then Design (www.andthendesign.co.uk)

Stage Door - Maritime Chair, Benjamin Hubert Studio (www.benjaminhubert.co.uk)

Admit One - SD 1.0 Chair, Andy Murray Studio (www.andymurraydesign.com)

Myriad - Fite Stool, Claire Anne O'Brien (www.claireanneobrien.com)

Myriad - Pelt Chair, Benjamin Hubert Studio (www.benjaminhubert.co.uk)

Integrate - Small Buffet Stools, Anthony Hartley (www.anthonhartley.com)

Syndicate - Fite Stool, Claire Anne O'Brien (www.claireanneobrien.com)

Comfortable Concrete - Cable Chairs and Small Buffet Stools, Anthony Hartley (www.anthonhartley.com)

Concourse - Pelt Chair, Benjamin Hubert Studio (www.benjaminhubert.co.uk)

Formwork Neutrals - Eames Plastic Armchair, Vitra (www.vitra.com)

Formwork Brights - Spline Chair, Dare Studio (www.darestudio.co.uk)

THE OMNI[®] PORTFOLIO

Have you seen our other Portfolio collections?



Texture Portfolio



Linear Portfolio



SAMPLE HOTLINE +44(0)1942 612 803

CUSTOMER SERVICE

T +44 (0)1942 612 777 | F +44 (0)1942 826 570 | carpetenquiries@milliken.com
Beech Hill Plant, Gidlow Lane, Wigan WN6 8RN, England

LONDON STUDIO

T +44 (0)20 7336 7290 | F +44 (0)20 7490 7829 | STUDIO@milliken.com
5 Berry Street, Clerkenwell, London EC1V 0AA, England